

Senator

Fuse Visitor

Fuse Cantilever chairs follow the same design philosophy and construction as their task chair sibling, featuring the same flexible 3D knitted back.

The Fuse Cantilever incorporates a concealed seat structure for additional comfort and support with a slender tubular steel frame concealed within the knitted covering.



Standard Features (*Selected models only)

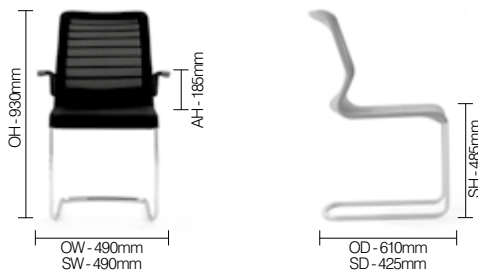
- Stacks upto 4*
- 3D knit seat & back*
- 3D knit back*
- Tubular steel cantilever frame*
- Black plastic arm*
- Injection moulded 5 star plastic base*
- Black gas lift - 150kg*
- Balance mechanism with travel limiter*
- Fixed arm with polished aluminium carrier*
- Plastic glides*

Optional Features

- Plastic glides with felt

Performance Standards

DIMENSIONS



Senator

Fuse Visitor—

Fuse Cantilever chairs follow the same design philosophy and construction as their task chair sibling, featuring the same flexible 3D knitted back.

The Fuse Cantilever incorporates a concealed seat structure for additional comfort and support with a slender tubular steel frame concealed within the knitted covering.



ENVIRONMENTAL

Material Content

Components are constructed of the following

	TBC%
Fabric	
	TBC%
Steel	
	TBC%
Aluminium Castings	
	TBC%
xxxx	
	TBC%
xxxx	

Recycled Content

Contains up to 0000% of Recycled Material

	TBC%
Fabric	
	TBC%
Steel	
	TBC%
Aluminium Castings	
	TBC%
xxxx	
	TBC%
xxxx	

Recyclability

The range is 100% recyclable

100%

SENATOR 3 R'S

Senator is committed to continually improving the sustainability of all environmental aspects within our business.

To meet both international standards and our own environmental targets we apply the three R's principle

-Reduce, Reuse and Recycle.

Whilst recycling is the element which receives the most exposure it is actually

the last option available and should never be the prime target in anyone's battle to reduce waste.

It is our duty as individuals and as a company to initially attempt to **Reduce** usage. Then we should look to **Reuse** wherever possible and finally, only after these two processes have been exhausted, should we consider **Recycling**.

-Reduce -Reuse -Recycle

Senator

Fuse Visitor

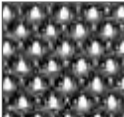
FINISH OPTIONS

Tubular steel cantilever frame available in either Black or Silver EPPC and Polished Chrome

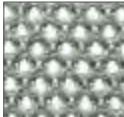
3D knit back or back and seat available in Black and Grey and Black and Grey two-tone

Fuse can be upholstered in a broad range of contract upholstery fabrics, vinyl and leathers from The Senator Group standard upholstery collection

3D KNIT COLOURS



Black

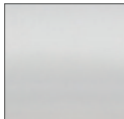


Grey

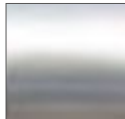
STEEL FRAME FINISHES



Black
EPPC



Silver
EPPC



Chrome

BASE FINISHES



Black GRP



Polished
Aluminium